



TURKS & CAICOS
Long Bay



The Club at Beach Enclave Long Bay

Beach Enclave Long Bay Phase II



Turks &
Caicos

Sotheby's
INTERNATIONAL REALTY

1. Phase 1 Villas
2. Beach Houses
3. The Club & Club Residences

- A. Lounge Bar & Restaurant
- B. Club Pool
- C. Beach Bar & Watersports
- D. Rooftop Wellness Spa
- E. Fitness Centre
- F. Tennis Court & other facilities
- G. Kids Club & Park
- H. Owner car garages / storage



Beach Enclave Long Bay Overview

After a complete sellout of Beach Enclave Long Bay Phase I Villas, this second phase features four 3-bedroom Beach Houses and the first true boutique resort in TCI, with 20 beachfront hotel units. The Club is set on a secluded corner of Long Bay beach within 8 acres of lush, tropical landscape and over 800 feet of white sand beach. Designed by acclaimed architects Jacobsen Arquitetura, The Club brings an exciting, modern, tropical design to Turks and Caicos, enhancing the Beach Enclave ethos of low density, clean lines softened with organic materials, and seamless indoor and outdoor spaces. **Limited ownership opportunities available.**



The Club Residences





One Bedroom Suite



Living Room/Kitchen



Oceanfront Master



Garden view Master

The Club Residences

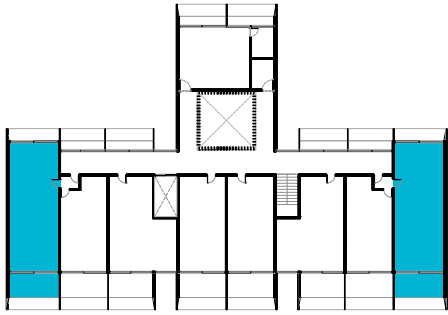
Only four Club Residences are available for purchase. These are all beach-facing corner units with wide frontage, full kitchen and indoor and outdoor living. Three layouts:

One-Bedroom Club Residence measuring 896 sqft, this corner unit boasts views of the entire bay and resort tropical gardens, and ample indoor and outdoor entertaining space.

Two-Bedroom Club Residence measuring 1,541 sqft and 32 ft of beach frontage, this spacious unit combines a One-Bedroom and an oversized Master Suite, with stand-alone bathtub and outdoor suspended daybed. The Master Suite is a lock-out, allowing for rental of two hotel units.

Three-Bedroom Club Residence measuring 2,550 sqft and spanning 54 ft of beach frontage, this penthouse unit has two Master Suites, offering three hotel units for rental. There is only one unit available.

Detailed specifications, pricing and availability upon request.

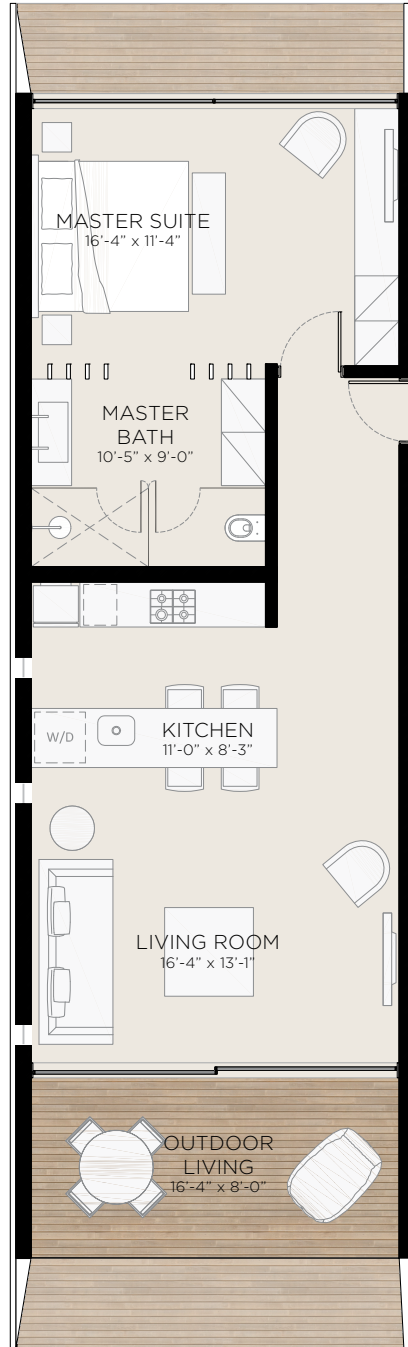


One-Bedroom Club Residence

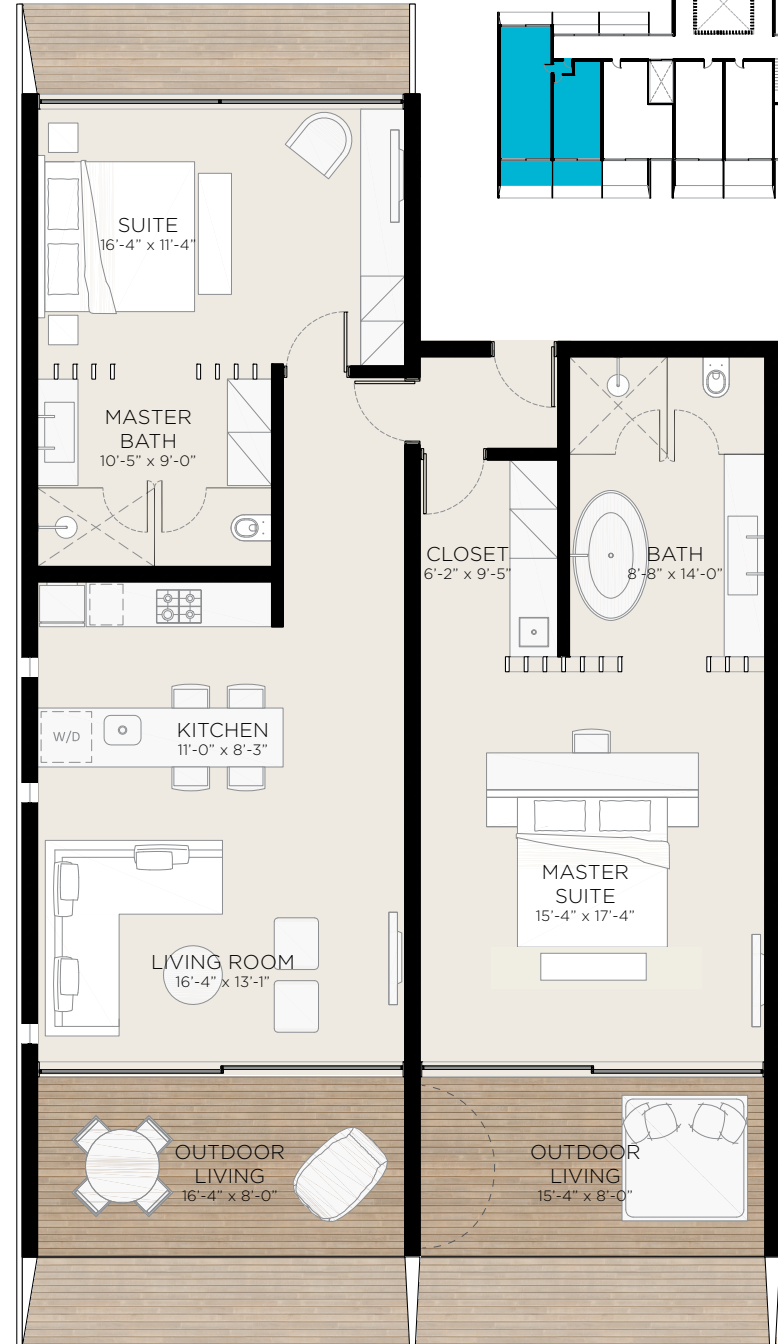
measuring 896 sqft, this corner unit boasts views of the entire bay and resort tropical gardens, and ample indoor and outdoor entertaining space.

Two-Bedroom Club Residence

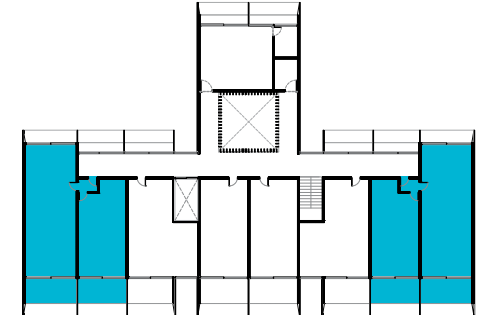
measuring 1,541 sqft and 32 ft of beach frontage, this spacious unit combines a One-Bedroom and an oversized Master Suite, with stand-alone bathtub and outdoor suspended daybed. The Master Suite is a lock-out, allowing for rental of two hotel units.

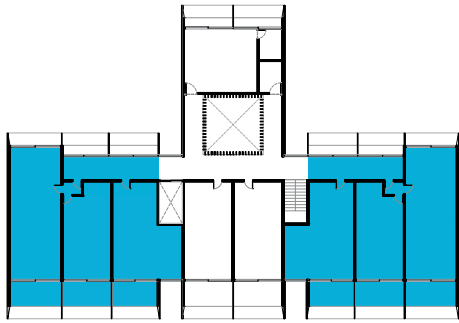


One-Bedroom Club Residence



Two-Bedroom Club Residence





Three-Bedroom Club Residence

measuring 2,550 sqft and spanning 54 ft of beach frontage, this penthouse unit has two Master Suites, offering three hotel units for rental. There is only one unit available.

Three-Bedroom Club Residence



The Beach Houses





Beach House Parcel Plan - Only 4 Houses Available

Each of the 4 Beach Houses are freestanding on a private land parcel, inclusive of a private beach area. The design showcases the architects' vision and Beach Enclave's design ethos of seamless indoor and outdoor spaces at its best. Outdoor entertainment areas include covered living spaces off the great room, sun deck and infinity pool, and optional beach deck. The third bedroom is set as an independent guest cottage, opening into the private garden.



Beach House - Living Areas

The large indoor kitchen (available in two design options) and great room feature double ceiling height, generous natural light and floor-to-ceiling glass opening onto the expansive covered deck. The covered deck offers covered lounging and dining spaces plein-air and the option to add a summer kitchen.

Finishes are of the Beach Enclave standard, and include Sub-Zero & Wolf appliances; high-end, handmade custom millwork throughout; high quality, large format European tiling; ipe hardwood decks; high ceilings; lighting design; sound system.

Detailed specifications upon request. Visits to or stays at the Beach Enclave Villas can be arranged.

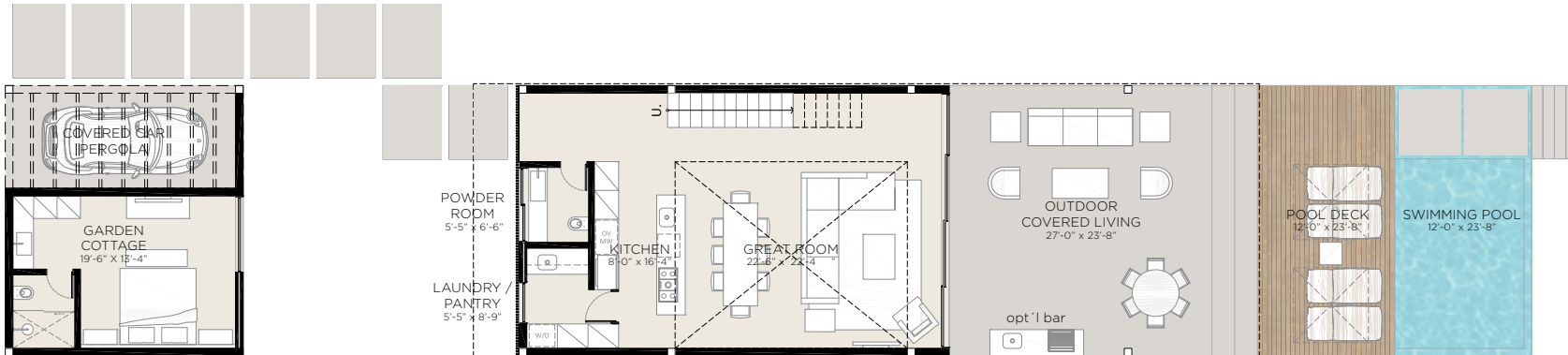


Beach House - Oceanfront Master Suite

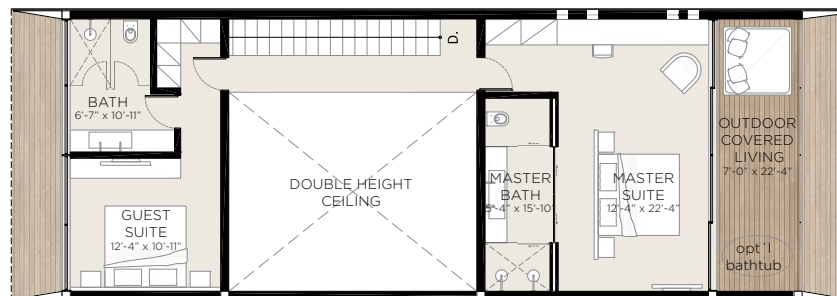
The upper level, wide facing Master Suite overlooks the beach through the floor to ceiling sliding glass doors and private balcony. Master bathroom features walk-in, double shower and double vanity. Optional outdoor bathtub. Two master layout options available.

Openings to balconies and terraces are floor-to-ceiling, wide sliding glass doors with hurricane impact rating. This is a unique opportunity to own a freestanding beachfront home within a managed resort.

Total 3,188 SF



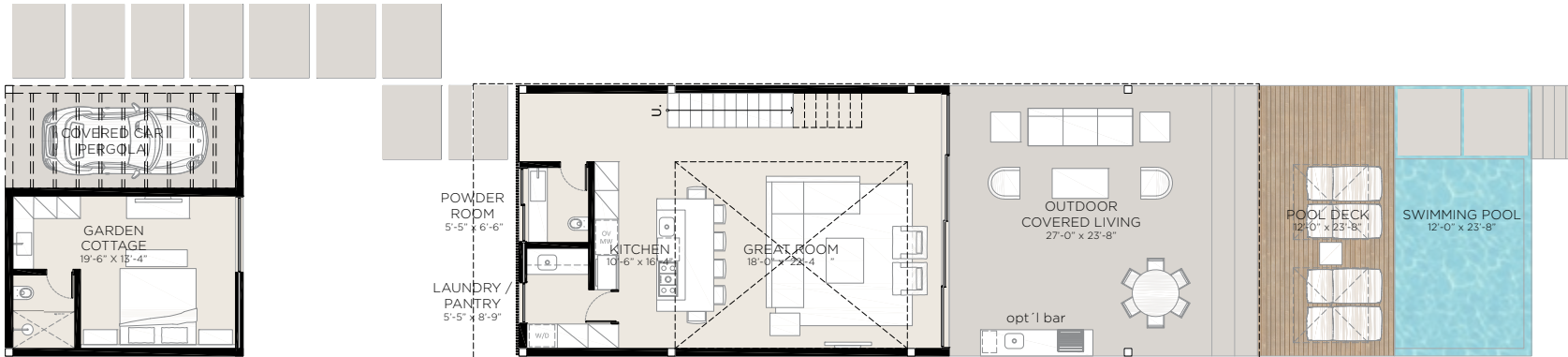
LEVEL 1



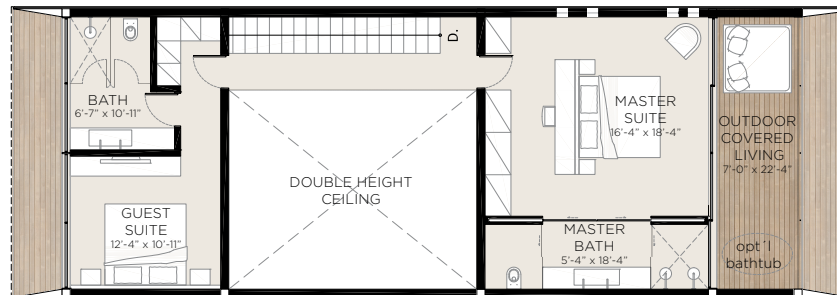
LEVEL 2

UNDER ROOF.....	2,620 SQFT
DECK & POOL.....	568 SQFT
TOTAL AREA.....	3,188 SQFT

Beach House Option A



LEVEL 1



LEVEL 2

UNDER ROOF.....	2,620 SQFT
DECK & POOL.....	568 SQFT
TOTAL AREA.....	3,188 SQFT

Beach House Option B



The Club Pool





Rooftop Wellness Spa



The Club Amenities

- One-of-a-kind, rooftop wellness spa, with hammam treatments, traditional massage, and a floating relaxation deck with stunning sunrise and sunset views
- Indoor-outdoor dining and bar, overlooking pool and beach
- Casual all-day beach bar and restaurant
- Sports facilities, including fully equipped a/c fitness center, lighted tennis courts, and daily sunrise yoga classes
- Kids' club and daily activities
- Non-motorized watersports and kiteboarding program
- Access to Beach Enclave's fleet of pleasure boats
- Beach Enclave butler, housekeeping, and chefs on call
- Home maintenance program



Beach Enclave Long Bay Phase I - Villas



Joe Zahm, President or Nina Siegenthaler, Vice President

649.231.6188 | joe@tcsothebysrealty.com | 649.231.0707 | nina@tcsothebysrealty.com

Turks & Caicos Sotheby's International Realty
Venture House, Grace Bay, Providenciales
turksandcaicosSIR.com

The Club at Beach Enclave Long Bay
View Price Sheet for Availability

